

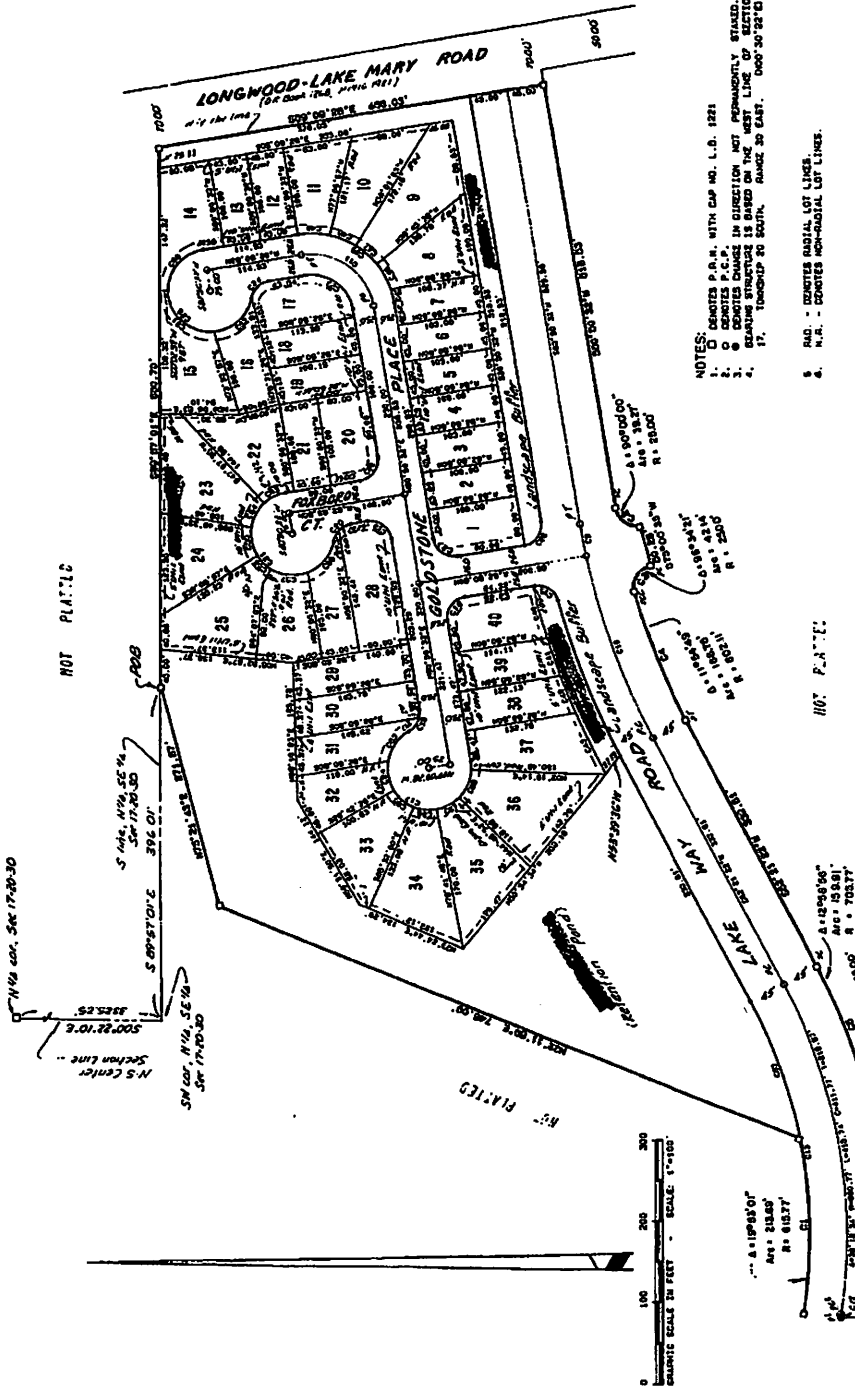
# LAKEWOOD AT THE CROSSINGS UNIT ONE

## SECTION 17, TOWNSHIP 20 SOUTH, RANGE 30 EAST SEMINOLE COUNTY, FLORIDA

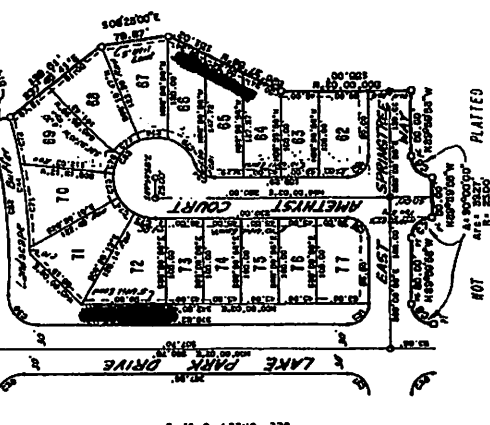
PLAT BOOK  
AND PAGE

32  
415

SHEET 2 OF 3



- NOTES:**
- 1. DIMENSIONS P.R.M. WITH C&G NO. L.A. 1221
  - 2. DIMENSIONS P.C.P. IN DIRECTION NOT APPROPRIATELY STAND.
  - 3. DIMENSIONS CHANGE IS BASED ON THE CENTER LINE OF ROAD.
  - 4. DIMENSIONS CHANGE IS BASED ON THE CENTER LINE OF ROAD.
  - 5. DIMENSIONS CHANGE IS BASED ON THE CENTER LINE OF ROAD.
  - 6. DIMENSIONS CHANGE IS BASED ON THE CENTER LINE OF ROAD.
  - 7. DIMENSIONS CHANGE IS BASED ON THE CENTER LINE OF ROAD.
  - 8. DIMENSIONS CHANGE IS BASED ON THE CENTER LINE OF ROAD.
  - 9. DIMENSIONS CHANGE IS BASED ON THE CENTER LINE OF ROAD.
  - 10. DIMENSIONS CHANGE IS BASED ON THE CENTER LINE OF ROAD.
  - 11. DIMENSIONS CHANGE IS BASED ON THE CENTER LINE OF ROAD.
  - 12. DIMENSIONS CHANGE IS BASED ON THE CENTER LINE OF ROAD.
  - 13. DIMENSIONS CHANGE IS BASED ON THE CENTER LINE OF ROAD.
  - 14. DIMENSIONS CHANGE IS BASED ON THE CENTER LINE OF ROAD.
  - 15. DIMENSIONS CHANGE IS BASED ON THE CENTER LINE OF ROAD.
  - 16. DIMENSIONS CHANGE IS BASED ON THE CENTER LINE OF ROAD.
  - 17. DIMENSIONS CHANGE IS BASED ON THE CENTER LINE OF ROAD.
  - 18. DIMENSIONS CHANGE IS BASED ON THE CENTER LINE OF ROAD.
  - 19. DIMENSIONS CHANGE IS BASED ON THE CENTER LINE OF ROAD.
  - 20. DIMENSIONS CHANGE IS BASED ON THE CENTER LINE OF ROAD.
  - 21. DIMENSIONS CHANGE IS BASED ON THE CENTER LINE OF ROAD.
  - 22. DIMENSIONS CHANGE IS BASED ON THE CENTER LINE OF ROAD.
  - 23. DIMENSIONS CHANGE IS BASED ON THE CENTER LINE OF ROAD.
  - 24. DIMENSIONS CHANGE IS BASED ON THE CENTER LINE OF ROAD.
  - 25. DIMENSIONS CHANGE IS BASED ON THE CENTER LINE OF ROAD.
  - 26. DIMENSIONS CHANGE IS BASED ON THE CENTER LINE OF ROAD.
  - 27. DIMENSIONS CHANGE IS BASED ON THE CENTER LINE OF ROAD.
  - 28. DIMENSIONS CHANGE IS BASED ON THE CENTER LINE OF ROAD.
  - 29. DIMENSIONS CHANGE IS BASED ON THE CENTER LINE OF ROAD.
  - 30. DIMENSIONS CHANGE IS BASED ON THE CENTER LINE OF ROAD.
  - 31. DIMENSIONS CHANGE IS BASED ON THE CENTER LINE OF ROAD.
  - 32. DIMENSIONS CHANGE IS BASED ON THE CENTER LINE OF ROAD.
  - 33. DIMENSIONS CHANGE IS BASED ON THE CENTER LINE OF ROAD.
  - 34. DIMENSIONS CHANGE IS BASED ON THE CENTER LINE OF ROAD.
  - 35. DIMENSIONS CHANGE IS BASED ON THE CENTER LINE OF ROAD.
  - 36. DIMENSIONS CHANGE IS BASED ON THE CENTER LINE OF ROAD.
  - 37. DIMENSIONS CHANGE IS BASED ON THE CENTER LINE OF ROAD.
  - 38. DIMENSIONS CHANGE IS BASED ON THE CENTER LINE OF ROAD.
  - 39. DIMENSIONS CHANGE IS BASED ON THE CENTER LINE OF ROAD.
  - 40. DIMENSIONS CHANGE IS BASED ON THE CENTER LINE OF ROAD.
  - 41. DIMENSIONS CHANGE IS BASED ON THE CENTER LINE OF ROAD.
  - 42. DIMENSIONS CHANGE IS BASED ON THE CENTER LINE OF ROAD.
  - 43. DIMENSIONS CHANGE IS BASED ON THE CENTER LINE OF ROAD.
  - 44. DIMENSIONS CHANGE IS BASED ON THE CENTER LINE OF ROAD.
  - 45. DIMENSIONS CHANGE IS BASED ON THE CENTER LINE OF ROAD.
  - 46. DIMENSIONS CHANGE IS BASED ON THE CENTER LINE OF ROAD.
  - 47. DIMENSIONS CHANGE IS BASED ON THE CENTER LINE OF ROAD.
  - 48. DIMENSIONS CHANGE IS BASED ON THE CENTER LINE OF ROAD.
  - 49. DIMENSIONS CHANGE IS BASED ON THE CENTER LINE OF ROAD.
  - 50. DIMENSIONS CHANGE IS BASED ON THE CENTER LINE OF ROAD.
  - 51. DIMENSIONS CHANGE IS BASED ON THE CENTER LINE OF ROAD.
  - 52. DIMENSIONS CHANGE IS BASED ON THE CENTER LINE OF ROAD.
  - 53. DIMENSIONS CHANGE IS BASED ON THE CENTER LINE OF ROAD.
  - 54. DIMENSIONS CHANGE IS BASED ON THE CENTER LINE OF ROAD.
  - 55. DIMENSIONS CHANGE IS BASED ON THE CENTER LINE OF ROAD.



### CURVE DATA

NO.	STARTING POINT	ENDING POINT	CHORD BEARING	CHORD DISTANCE	ARC BEARING	ARC DISTANCE	DEGREES	MINUTES	SECONDS
1	C1	C2	N 85° 15' 00" E	110.00	110.00	110.00	90	00	00
2	C2	C3	N 55° 00' 00" E	110.00	110.00	110.00	90	00	00
3	C3	C4	N 25° 00' 00" E	110.00	110.00	110.00	90	00	00
4	C4	C5	N 00° 00' 00" E	110.00	110.00	110.00	90	00	00
5	C5	C6	S 25° 00' 00" E	110.00	110.00	110.00	90	00	00
6	C6	C7	S 55° 00' 00" E	110.00	110.00	110.00	90	00	00
7	C7	C8	S 85° 15' 00" E	110.00	110.00	110.00	90	00	00
8	C8	C9	S 55° 00' 00" E	110.00	110.00	110.00	90	00	00
9	C9	C10	S 25° 00' 00" E	110.00	110.00	110.00	90	00	00
10	C10	C11	S 00° 00' 00" E	110.00	110.00	110.00	90	00	00
11	C11	C12	N 25° 00' 00" E	110.00	110.00	110.00	90	00	00
12	C12	C13	N 55° 00' 00" E	110.00	110.00	110.00	90	00	00
13	C13	C14	N 85° 15' 00" E	110.00	110.00	110.00	90	00	00
14	C14	C15	N 55° 00' 00" E	110.00	110.00	110.00	90	00	00
15	C15	C16	N 25° 00' 00" E	110.00	110.00	110.00	90	00	00
16	C16	C17	N 00° 00' 00" E	110.00	110.00	110.00	90	00	00
17	C17	C18	S 25° 00' 00" E	110.00	110.00	110.00	90	00	00
18	C18	C19	S 55° 00' 00" E	110.00	110.00	110.00	90	00	00
19	C19	C20	S 85° 15' 00" E	110.00	110.00	110.00	90	00	00
20	C20	C21	S 55° 00' 00" E	110.00	110.00	110.00	90	00	00
21	C21	C22	S 25° 00' 00" E	110.00	110.00	110.00	90	00	00
22	C22	C23	S 00° 00' 00" E	110.00	110.00	110.00	90	00	00
23	C23	C24	N 25° 00' 00" E	110.00	110.00	110.00	90	00	00
24	C24	C25	N 55° 00' 00" E	110.00	110.00	110.00	90	00	00
25	C25	C26	N 85° 15' 00" E	110.00	110.00	110.00	90	00	00
26	C26	C27	N 55° 00' 00" E	110.00	110.00	110.00	90	00	00
27	C27	C28	N 25° 00' 00" E	110.00	110.00	110.00	90	00	00
28	C28	C29	N 00° 00' 00" E	110.00	110.00	110.00	90	00	00
29	C29	C30	S 25° 00' 00" E	110.00	110.00	110.00	90	00	00
30	C30	C31	S 55° 00' 00" E	110.00	110.00	110.00	90	00	00
31	C31	C32	S 85° 15' 00" E	110.00	110.00	110.00	90	00	00
32	C32	C33	S 55° 00' 00" E	110.00	110.00	110.00	90	00	00
33	C33	C34	S 25° 00' 00" E	110.00	110.00	110.00	90	00	00
34	C34	C35	S 00° 00' 00" E	110.00	110.00	110.00	90	00	00
35	C35	C36	N 25° 00' 00" E	110.00	110.00	110.00	90	00	00
36	C36	C37	N 55° 00' 00" E	110.00	110.00	110.00	90	00	00
37	C37	C38	N 85° 15' 00" E	110.00	110.00	110.00	90	00	00
38	C38	C39	N 55° 00' 00" E	110.00	110.00	110.00	90	00	00
39	C39	C40	N 25° 00' 00" E	110.00	110.00	110.00	90	00	00
40	C40	C41	N 00° 00' 00" E	110.00	110.00	110.00	90	00	00
41	C41	C42	S 25° 00' 00" E	110.00	110.00	110.00	90	00	00
42	C42	C43	S 55° 00' 00" E	110.00	110.00	110.00	90	00	00
43	C43	C44	S 85° 15' 00" E	110.00	110.00	110.00	90	00	00
44	C44	C45	S 55° 00' 00" E	110.00	110.00	110.00	90	00	00
45	C45	C46	S 25° 00' 00" E	110.00	110.00	110.00	90	00	00
46	C46	C47	S 00° 00' 00" E	110.00	110.00	110.00	90	00	00
47	C47	C48	N 25° 00' 00" E	110.00	110.00	110.00	90	00	00
48	C48	C49	N 55° 00' 00" E	110.00	110.00	110.00	90	00	00
49	C49	C50	N 85° 15' 00" E	110.00	110.00	110.00	90	00	00
50	C50	C51	N 55° 00' 00" E	110.00	110.00	110.00	90	00	00
51	C51	C52	N 25° 00' 00" E	110.00	110.00	110.00	90	00	00
52	C52	C53	N 00° 00' 00" E	110.00	110.00	110.00	90	00	00
53	C53	C54	S 25° 00' 00" E	110.00	110.00	110.00	90	00	00
54	C54	C55	S 55° 00' 00" E	110.00	110.00	110.00	90	00	00
55	C55	C56	S 85° 15' 00" E	110.00	110.00	110.00	90	00	00
56	C56	C57	S 55° 00' 00" E	110.00	110.00	110.00	90	00	00
57	C57	C58	S 25° 00' 00" E	110.00	110.00	110.00	90	00	00
58	C58	C59	S 00° 00' 00" E	110.00	110.00	110.00	90	00	00
59	C59	C60	N 25° 00' 00" E	110.00	110.00	110.00	90	00	00

**bowyer-  
singleton &  
associates**  
INCORPORATED  
1000 N. W. 10th St.  
Tallahassee, Fla. 32310  
TEL: 385-4111

SEE SHEET 3 OF 3

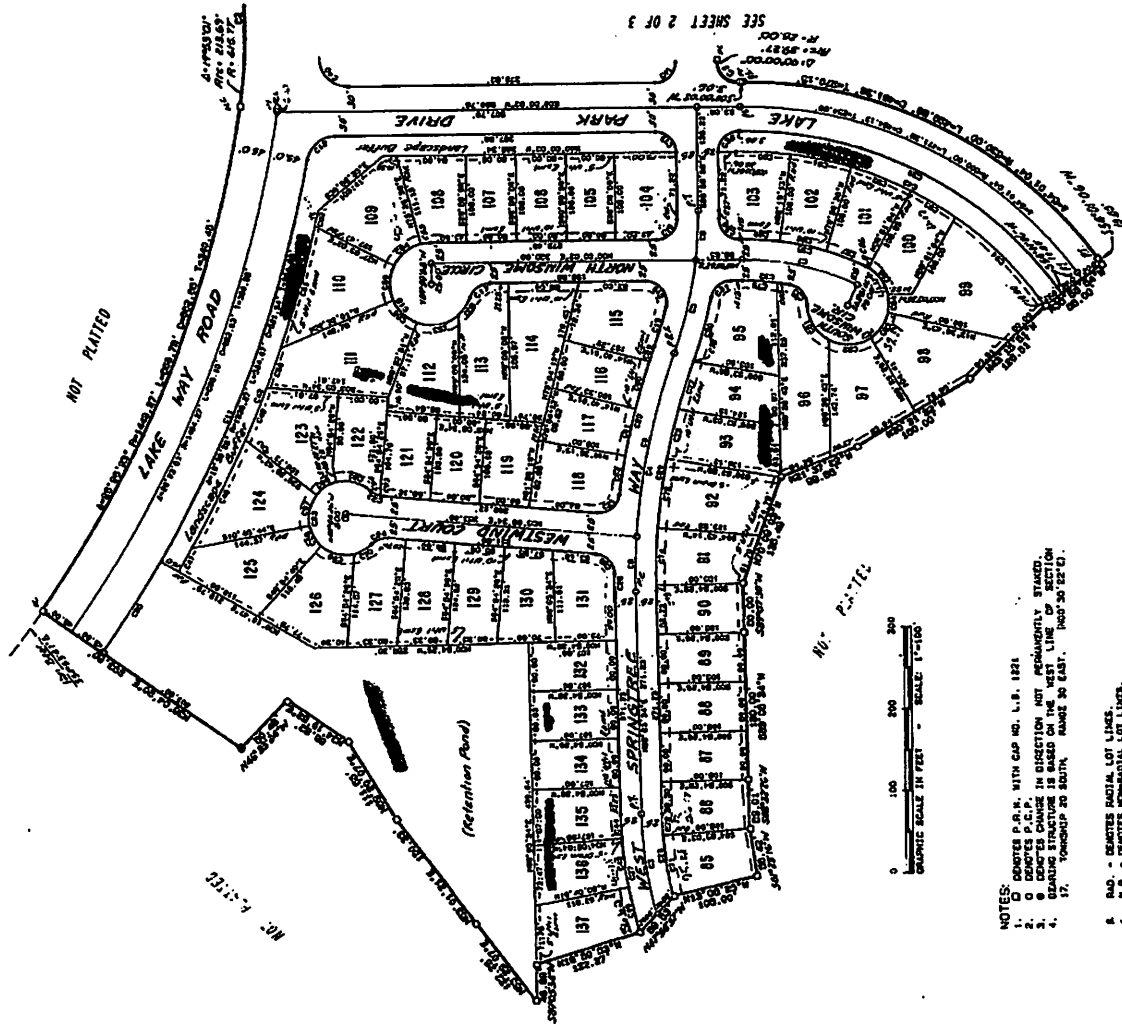
# LAKEWOOD AT THE CROSSINGS UNIT ONE

## SECTION 17, TOWNSHIP 20 SOUTH, RANGE 30 EAST

### SEMINOLE COUNTY, FLORIDA

PLAT BOOK 32  
AND PAGE 46

SHEET 3 OF 3



- NOTES:
1. D - QUARTER P.C.M. WITH CAP NO. L.S. 1821
  2. O - QUARTER P.C.M.
  3. @ - QUARTER CHANGE IN DIRECTION, NOT PERMANENTLY STAKED
  4. @ - BEARING STRUCTURE IS BASED ON THE WEST LINE
  5. @ - TOWNSHIP 20 SOUTH, RANGE 30 EAST, PLAT 30 52 10
  6. R.O. - QUARTER RADIAL LOT LINES.
  7. M.R. - QUARTER NON-RADIAL LOT LINES.

**bowyer-  
singleton &  
associates**  
INCORPORATED  
1000 W. UNIVERSITY AVENUE  
SUITE 200  
ORLANDO, FLORIDA 32817  
TEL. 305-244-1111

STATION	CHORD BEARING	CHORD DISTANCE	CHORD AREA	CHORD PERIMETER	CHORD PERCENTAGE
100	...	...	...	...	...
101	...	...	...	...	...
102	...	...	...	...	...
103	...	...	...	...	...
104	...	...	...	...	...
105	...	...	...	...	...
106	...	...	...	...	...
107	...	...	...	...	...
108	...	...	...	...	...
109	...	...	...	...	...
110	...	...	...	...	...
111	...	...	...	...	...
112	...	...	...	...	...
113	...	...	...	...	...
114	...	...	...	...	...
115	...	...	...	...	...
116	...	...	...	...	...
117	...	...	...	...	...
118	...	...	...	...	...
119	...	...	...	...	...
120	...	...	...	...	...
121	...	...	...	...	...
122	...	...	...	...	...
123	...	...	...	...	...
124	...	...	...	...	...
125	...	...	...	...	...
126	...	...	...	...	...
127	...	...	...	...	...
128	...	...	...	...	...
129	...	...	...	...	...
130	...	...	...	...	...
131	...	...	...	...	...
132	...	...	...	...	...
133	...	...	...	...	...
134	...	...	...	...	...
135	...	...	...	...	...
136	...	...	...	...	...
137	...	...	...	...	...

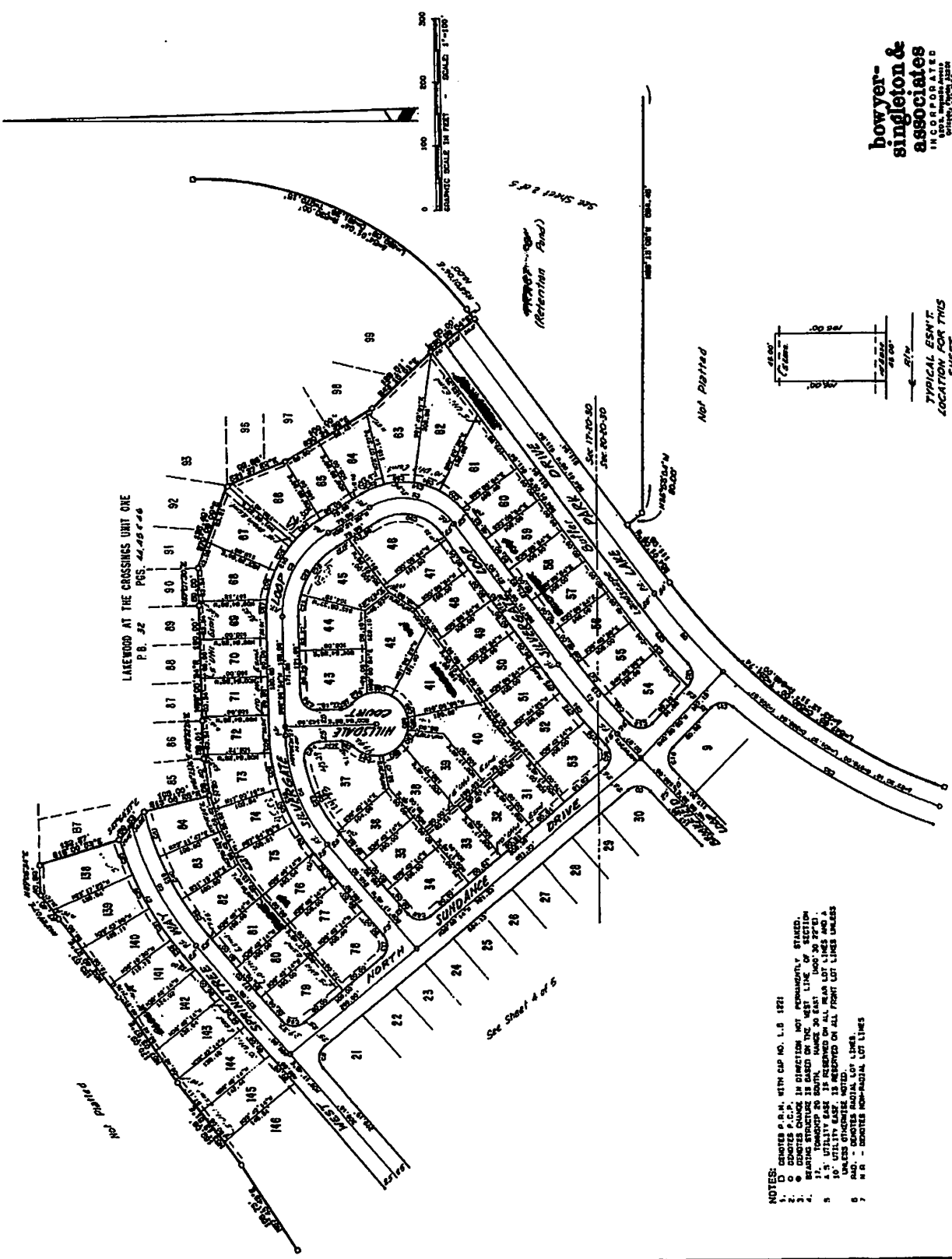


# LAKEWOOD AT THE CROSSINGS UNIT TWO

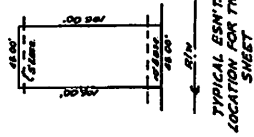
SECTIONS 17 & 20, TOWNSHIP 20 SOUTH, RANGE 30 EAST  
SEMINOLE COUNTY, FLORIDA

PLAT BOOK 33  
AND PAGE 51

SHEET 3 OF 6



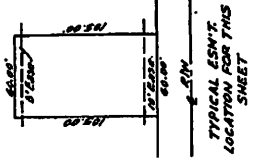
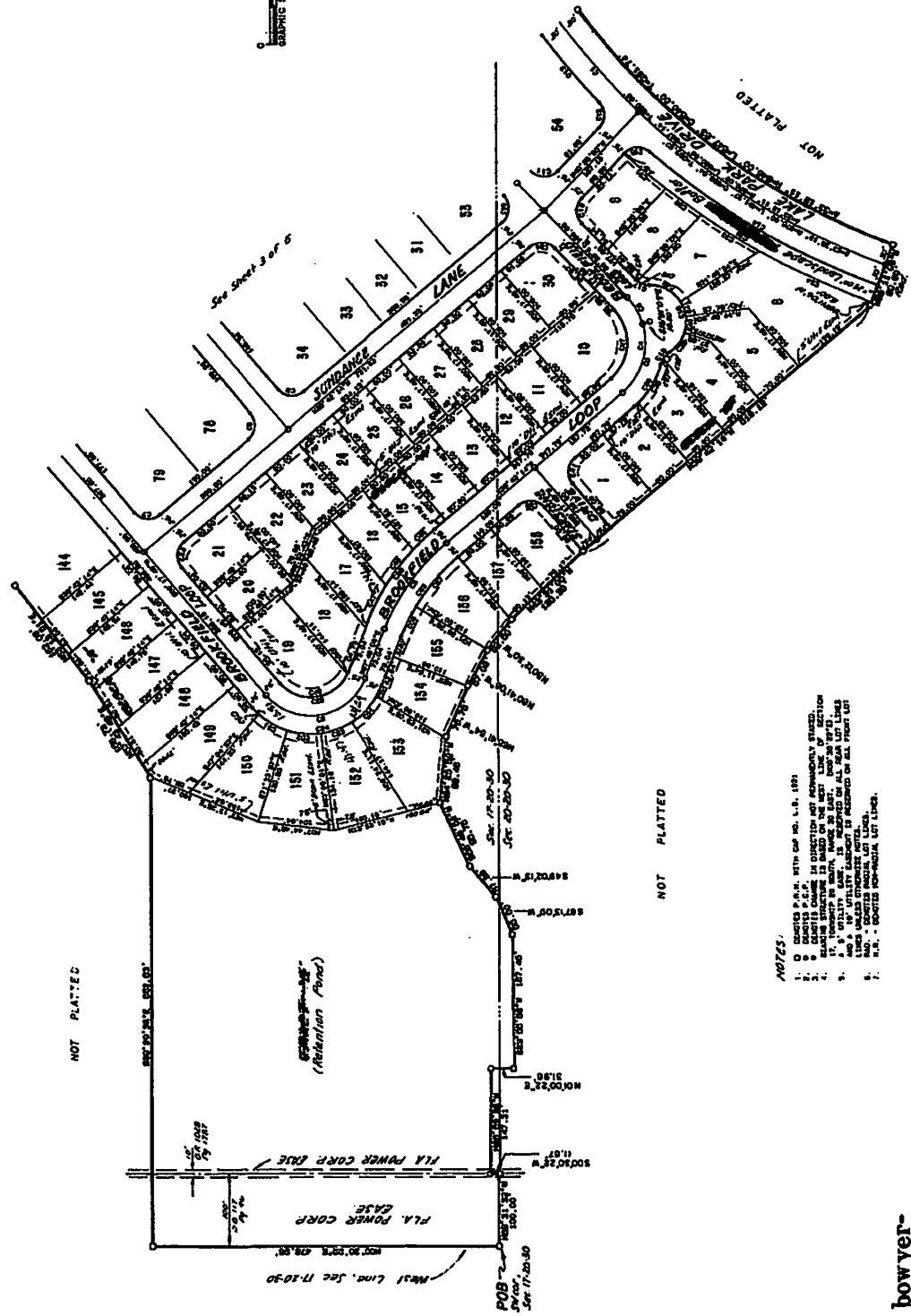
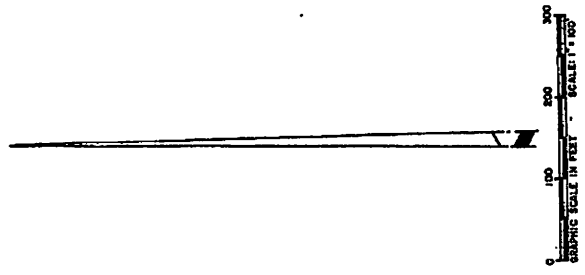
- NOTES:
1. CONVEYED S.P.M. WITH CAP NO. L.S. 1821
  2. 0 - CENTER P.C.P.
  3. 0 - CENTER CHANGE IN DIRECTION NOT NECESSARILY STATED.
  4. BEARING STRUCTURE IS BASED ON THE MERIDIAN LINE OF SECTION.
  5. 10' - 10' UTILITY EASE, IS PRESERVED ON ALL REAR LOT LINES AND A 5' UTILITY EASE, IS PRESERVED ON ALL FRONT LOT LINES UNLESS OTHERWISE SHOWN.
  6. UNLESS OTHERWISE NOTED, ALL LOT LINES ARE 10' WIDE.
  7. W/R - DENOTES NON-RADIAL LOT LINES.



**howyer-  
singleton &  
associates**  
INCORPORATED  
REGISTERED PROFESSIONAL ENGINEERS  
FLORIDA LICENSE NO. 12521

# LAKELWOOD AT THE CROSSINGS UNIT TWO

SECTIONS 17 & 20, TOWNSHIP 20 SOUTH, RANGE 30 EAST  
SEMINOLE COUNTY, FLORIDA



- NOTES:
1. D. DATED P.L.M. WITH CDP NO. S.A. 181.
  2. D. DATED P.L.M. IN CONNECTION NOT NECESSARILY STATED.
  3. D. DATED P.L.M. IN CONNECTION NOT NECESSARILY STATED.
  4. EXISTING STRUCTURE IS BASED ON THE BEST AVAILABLE INFORMATION.
  5. ALL UTILITIES SHOWN ARE BASED ON ALL AVAILABLE RECORDS.
  6. ALL UTILITY EASEMENTS IS ASSUMED TO BE FROM LOT TO LOT.
  7. ALL UTILITIES SHOWN ARE BASED ON ALL AVAILABLE RECORDS.
  8. ALL UTILITIES SHOWN ARE BASED ON ALL AVAILABLE RECORDS.
  9. ALL UTILITIES SHOWN ARE BASED ON ALL AVAILABLE RECORDS.
  10. ALL UTILITIES SHOWN ARE BASED ON ALL AVAILABLE RECORDS.

**bowyer-  
singleton &  
associates**  
INCORPORATED  
1000 N. W. 10th St.  
Miami, Florida 33136  
Tel: 305-375-1100

TYPICAL ES&T  
LOCATION FOR THIS  
SHEET

NOT PLATTED

NOT PLATTED

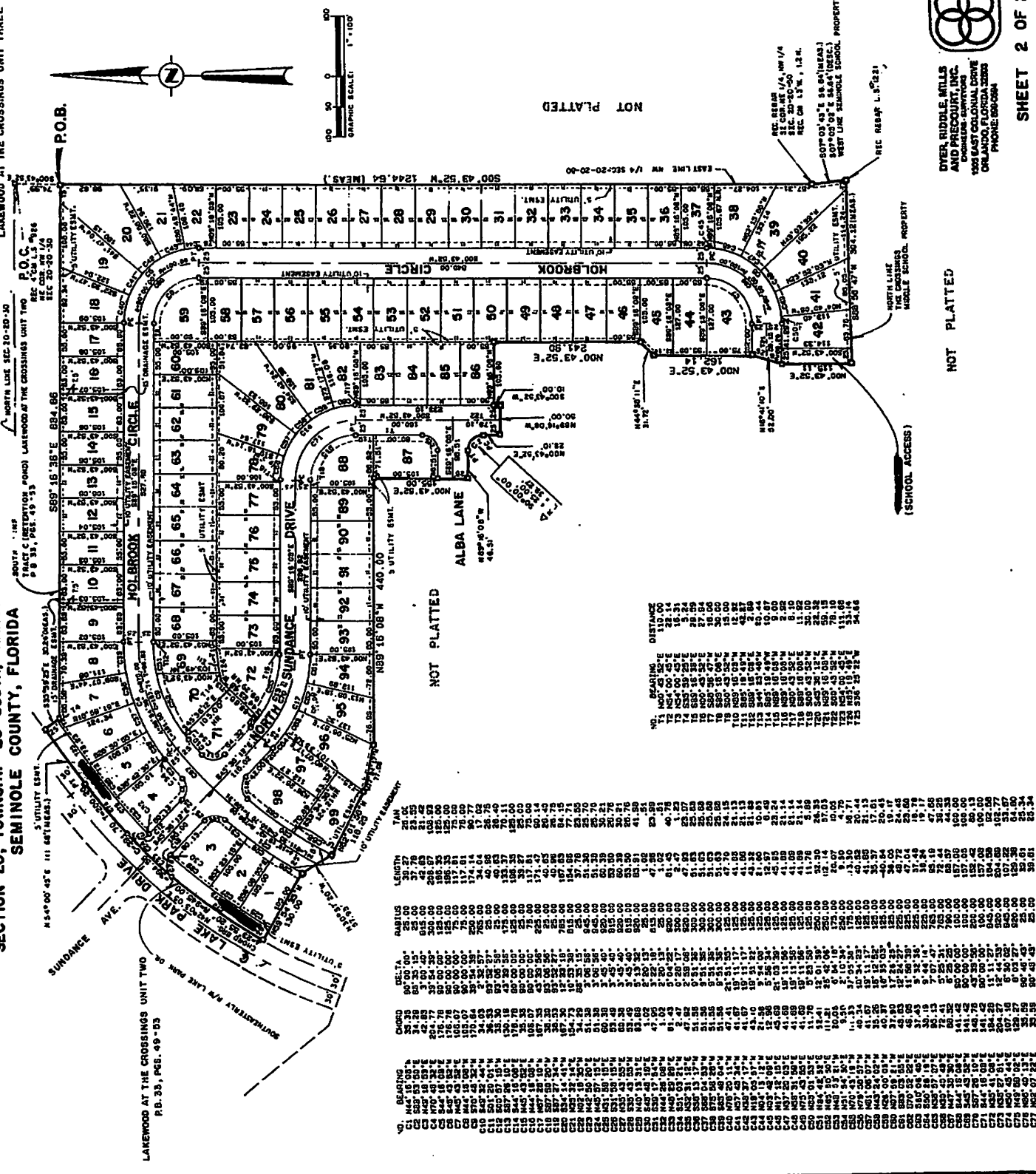
NOT PLATTED

Next Line, Sec 17-20-30  
FLA. POWER CORP.  
FLA. POWER CORP.  
FLA. POWER CORP. DUE

(Retention Pond)

See Sheet 3 of 5

**LAKEWOOD AT THE CROSSINGS-UNIT THREE**  
SECTION 20, TOWNSHIP 20 SOUTH, RANGE 30 EAST  
SEMINOLE COUNTY, FLORIDA



LOT	BEARING	CHORD	DELTA	RADIUS	LENGTH	T.W.M.	DISTANCE
C1	N 89° 00' 45" E 111.48' (MEAS.)	23.55	110.00	23.55	110.00	110.00	110.00
C2	S 89° 00' 45" W 111.48' (MEAS.)	23.55	110.00	23.55	110.00	110.00	110.00
C3	N 89° 00' 45" E 111.48' (MEAS.)	23.55	110.00	23.55	110.00	110.00	110.00
C4	S 89° 00' 45" W 111.48' (MEAS.)	23.55	110.00	23.55	110.00	110.00	110.00
C5	N 89° 00' 45" E 111.48' (MEAS.)	23.55	110.00	23.55	110.00	110.00	110.00
C6	S 89° 00' 45" W 111.48' (MEAS.)	23.55	110.00	23.55	110.00	110.00	110.00
C7	N 89° 00' 45" E 111.48' (MEAS.)	23.55	110.00	23.55	110.00	110.00	110.00
C8	S 89° 00' 45" W 111.48' (MEAS.)	23.55	110.00	23.55	110.00	110.00	110.00
C9	N 89° 00' 45" E 111.48' (MEAS.)	23.55	110.00	23.55	110.00	110.00	110.00
C10	S 89° 00' 45" W 111.48' (MEAS.)	23.55	110.00	23.55	110.00	110.00	110.00
C11	N 89° 00' 45" E 111.48' (MEAS.)	23.55	110.00	23.55	110.00	110.00	110.00
C12	S 89° 00' 45" W 111.48' (MEAS.)	23.55	110.00	23.55	110.00	110.00	110.00
C13	N 89° 00' 45" E 111.48' (MEAS.)	23.55	110.00	23.55	110.00	110.00	110.00
C14	S 89° 00' 45" W 111.48' (MEAS.)	23.55	110.00	23.55	110.00	110.00	110.00
C15	N 89° 00' 45" E 111.48' (MEAS.)	23.55	110.00	23.55	110.00	110.00	110.00
C16	S 89° 00' 45" W 111.48' (MEAS.)	23.55	110.00	23.55	110.00	110.00	110.00
C17	N 89° 00' 45" E 111.48' (MEAS.)	23.55	110.00	23.55	110.00	110.00	110.00
C18	S 89° 00' 45" W 111.48' (MEAS.)	23.55	110.00	23.55	110.00	110.00	110.00
C19	N 89° 00' 45" E 111.48' (MEAS.)	23.55	110.00	23.55	110.00	110.00	110.00
C20	S 89° 00' 45" W 111.48' (MEAS.)	23.55	110.00	23.55	110.00	110.00	110.00
C21	N 89° 00' 45" E 111.48' (MEAS.)	23.55	110.00	23.55	110.00	110.00	110.00
C22	S 89° 00' 45" W 111.48' (MEAS.)	23.55	110.00	23.55	110.00	110.00	110.00
C23	N 89° 00' 45" E 111.48' (MEAS.)	23.55	110.00	23.55	110.00	110.00	110.00
C24	S 89° 00' 45" W 111.48' (MEAS.)	23.55	110.00	23.55	110.00	110.00	110.00
C25	N 89° 00' 45" E 111.48' (MEAS.)	23.55	110.00	23.55	110.00	110.00	110.00
C26	S 89° 00' 45" W 111.48' (MEAS.)	23.55	110.00	23.55	110.00	110.00	110.00
C27	N 89° 00' 45" E 111.48' (MEAS.)	23.55	110.00	23.55	110.00	110.00	110.00
C28	S 89° 00' 45" W 111.48' (MEAS.)	23.55	110.00	23.55	110.00	110.00	110.00
C29	N 89° 00' 45" E 111.48' (MEAS.)	23.55	110.00	23.55	110.00	110.00	110.00
C30	S 89° 00' 45" W 111.48' (MEAS.)	23.55	110.00	23.55	110.00	110.00	110.00
C31	N 89° 00' 45" E 111.48' (MEAS.)	23.55	110.00	23.55	110.00	110.00	110.00
C32	S 89° 00' 45" W 111.48' (MEAS.)	23.55	110.00	23.55	110.00	110.00	110.00
C33	N 89° 00' 45" E 111.48' (MEAS.)	23.55	110.00	23.55	110.00	110.00	110.00
C34	S 89° 00' 45" W 111.48' (MEAS.)	23.55	110.00	23.55	110.00	110.00	110.00
C35	N 89° 00' 45" E 111.48' (MEAS.)	23.55	110.00	23.55	110.00	110.00	110.00
C36	S 89° 00' 45" W 111.48' (MEAS.)	23.55	110.00	23.55	110.00	110.00	110.00
C37	N 89° 00' 45" E 111.48' (MEAS.)	23.55	110.00	23.55	110.00	110.00	110.00
C38	S 89° 00' 45" W 111.48' (MEAS.)	23.55	110.00	23.55	110.00	110.00	110.00
C39	N 89° 00' 45" E 111.48' (MEAS.)	23.55	110.00	23.55	110.00	110.00	110.00
C40	S 89° 00' 45" W 111.48' (MEAS.)	23.55	110.00	23.55	110.00	110.00	110.00
C41	N 89° 00' 45" E 111.48' (MEAS.)	23.55	110.00	23.55	110.00	110.00	110.00
C42	S 89° 00' 45" W 111.48' (MEAS.)	23.55	110.00	23.55	110.00	110.00	110.00
C43	N 89° 00' 45" E 111.48' (MEAS.)	23.55	110.00	23.55	110.00	110.00	110.00
C44	S 89° 00' 45" W 111.48' (MEAS.)	23.55	110.00	23.55	110.00	110.00	110.00
C45	N 89° 00' 45" E 111.48' (MEAS.)	23.55	110.00	23.55	110.00	110.00	110.00
C46	S 89° 00' 45" W 111.48' (MEAS.)	23.55	110.00	23.55	110.00	110.00	110.00
C47	N 89° 00' 45" E 111.48' (MEAS.)	23.55	110.00	23.55	110.00	110.00	110.00
C48	S 89° 00' 45" W 111.48' (MEAS.)	23.55	110.00	23.55	110.00	110.00	110.00
C49	N 89° 00' 45" E 111.48' (MEAS.)	23.55	110.00	23.55	110.00	110.00	110.00
C50	S 89° 00' 45" W 111.48' (MEAS.)	23.55	110.00	23.55	110.00	110.00	110.00
C51	N 89° 00' 45" E 111.48' (MEAS.)	23.55	110.00	23.55	110.00	110.00	110.00
C52	S 89° 00' 45" W 111.48' (MEAS.)	23.55	110.00	23.55	110.00	110.00	110.00
C53	N 89° 00' 45" E 111.48' (MEAS.)	23.55	110.00	23.55	110.00	110.00	110.00
C54	S 89° 00' 45" W 111.48' (MEAS.)	23.55	110.00	23.55	110.00	110.00	110.00
C55	N 89° 00' 45" E 111.48' (MEAS.)	23.55	110.00	23.55	110.00	110.00	110.00
C56	S 89° 00' 45" W 111.48' (MEAS.)	23.55	110.00	23.55	110.00	110.00	110.00
C57	N 89° 00' 45" E 111.48' (MEAS.)	23.55	110.00	23.55	110.00	110.00	110.00

LAKEWOOD AT THE CROSSINGS UNIT TWO  
P.B. 33, PAGES 49-53

LAKEWOOD AT THE CROSSINGS UNIT TWO  
P.O.C.  
REF. 4th L.S. 9146  
REC. 20-20-30

LAKEWOOD AT THE CROSSINGS UNIT TWO  
P.O.C.  
REF. 4th L.S. 9146  
REC. 20-20-30

LAKEWOOD AT THE CROSSINGS UNIT TWO  
P.O.C.  
REF. 4th L.S. 9146  
REC. 20-20-30

LAKEWOOD AT THE CROSSINGS UNIT TWO  
P.O.C.  
REF. 4th L.S. 9146  
REC. 20-20-30

LAKEWOOD AT THE CROSSINGS UNIT TWO  
P.O.C.  
REF. 4th L.S. 9146  
REC. 20-20-30



NOT PLATTED

NOT PLATTED

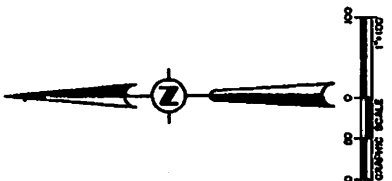
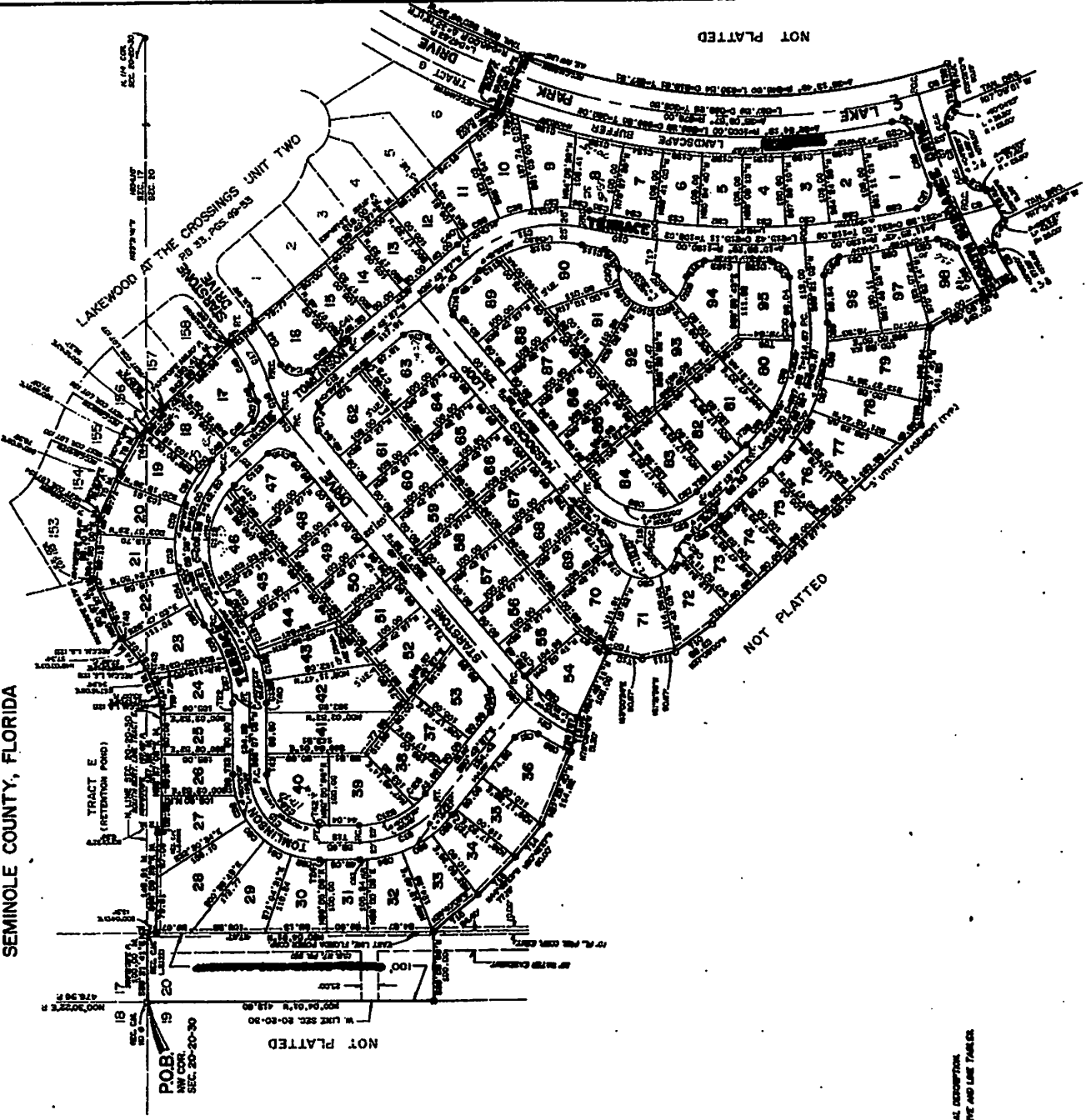


**DYER, RIDDE, MILLS  
AND PRESCOTT, INC.**  
DESIGNERS-ENGINEERS  
100 EAST GOLFVIEW DRIVE  
ORLANDO, FLORIDA 32804  
PHONE: 869-8888

NOT PLATTED

# LAKEWOOD AT THE CROSSINGS UNIT FOUR

SECTIONS 17 & 20, TOWNSHIP 20 SOUTH, RANGE 30 EAST  
SEMINOLE COUNTY, FLORIDA



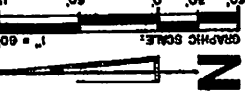
NOTE: SEE SHEET 1 OF 3 FOR LEGAL DESCRIPTION.  
SEE SHEET 2 OF 3 FOR CURVE AND LINE TABLES.



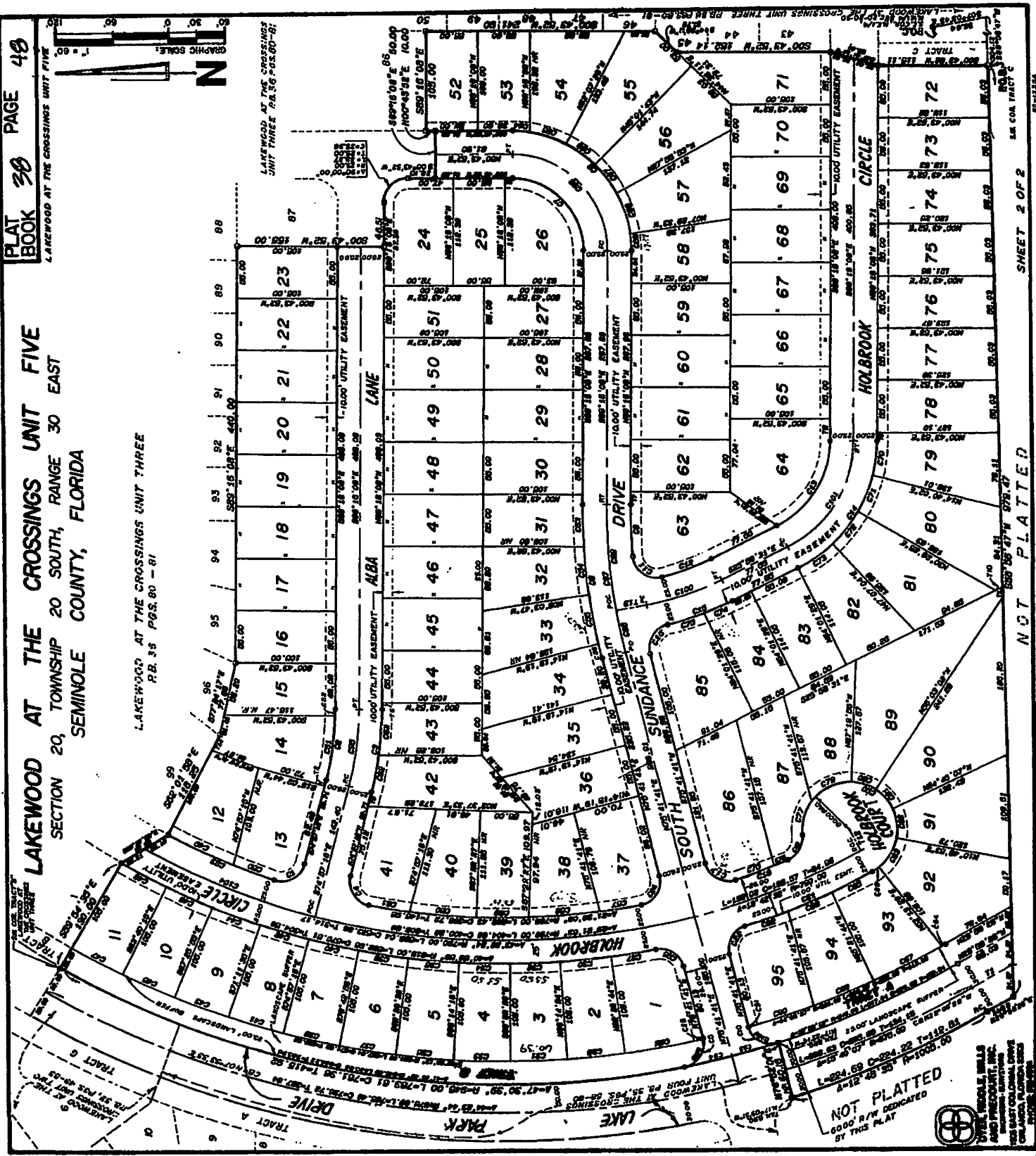
DYER, MIDDLE, MILLS  
AND PRECOURT, INC.  
1000 EAST COLONIAL BLVD.  
ORLANDO, FLORIDA 32817  
PH: 407-261-1000

LAKELWOOD AT THE CROSSINGS UNIT FIVE  
SECTION 20, TOWNSHIP 20 SOUTH, RANGE 30 EAST  
SEMINOLE COUNTY, FLORIDA

LAKELWOOD AT THE CROSSINGS UNIT THREE  
P.B. 38 PGS. 80 - 81



LAKELWOOD AT THE CROSSINGS UNIT THREE  
P.B. 38 PGS. 80 - 81



NOT PLATTED  
6000' R/W DEDICATED  
BY THIS PLAT



DAVE WOODS, SURVEYOR  
105 EAST COLLEGE DRIVE  
ORLANDO, FLORIDA 32801

NOT PLATTED

SHEET 2 OF 2

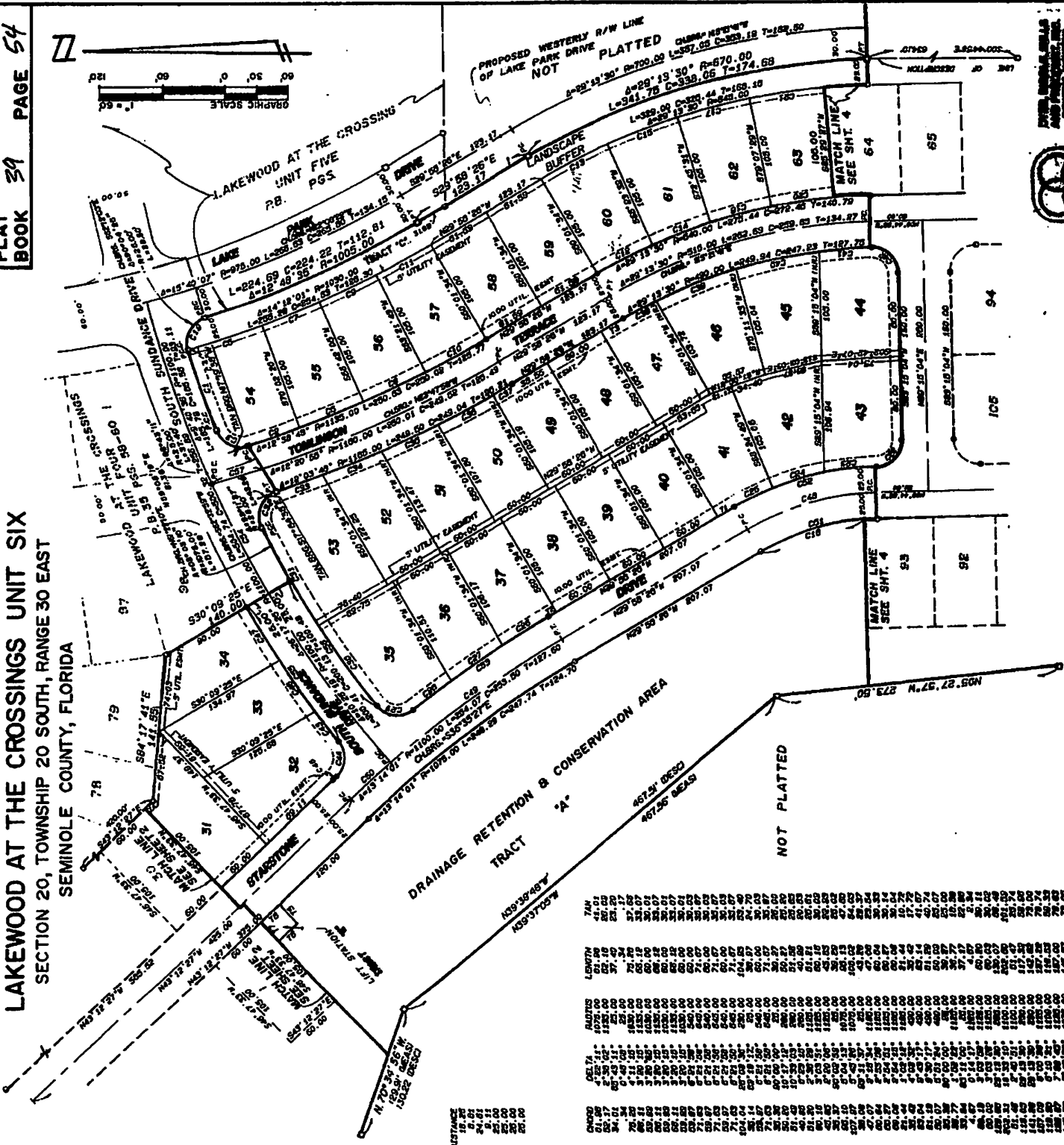
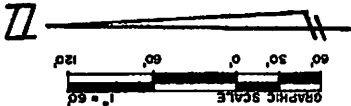
S.M. COA TRACT C

91-12324





LAKWOOD AT THE CROSSINGS UNIT SIX  
SECTION 20, TOWNSHIP 20 SOUTH, RANGE 30 EAST  
SEMINOLE COUNTY, FLORIDA



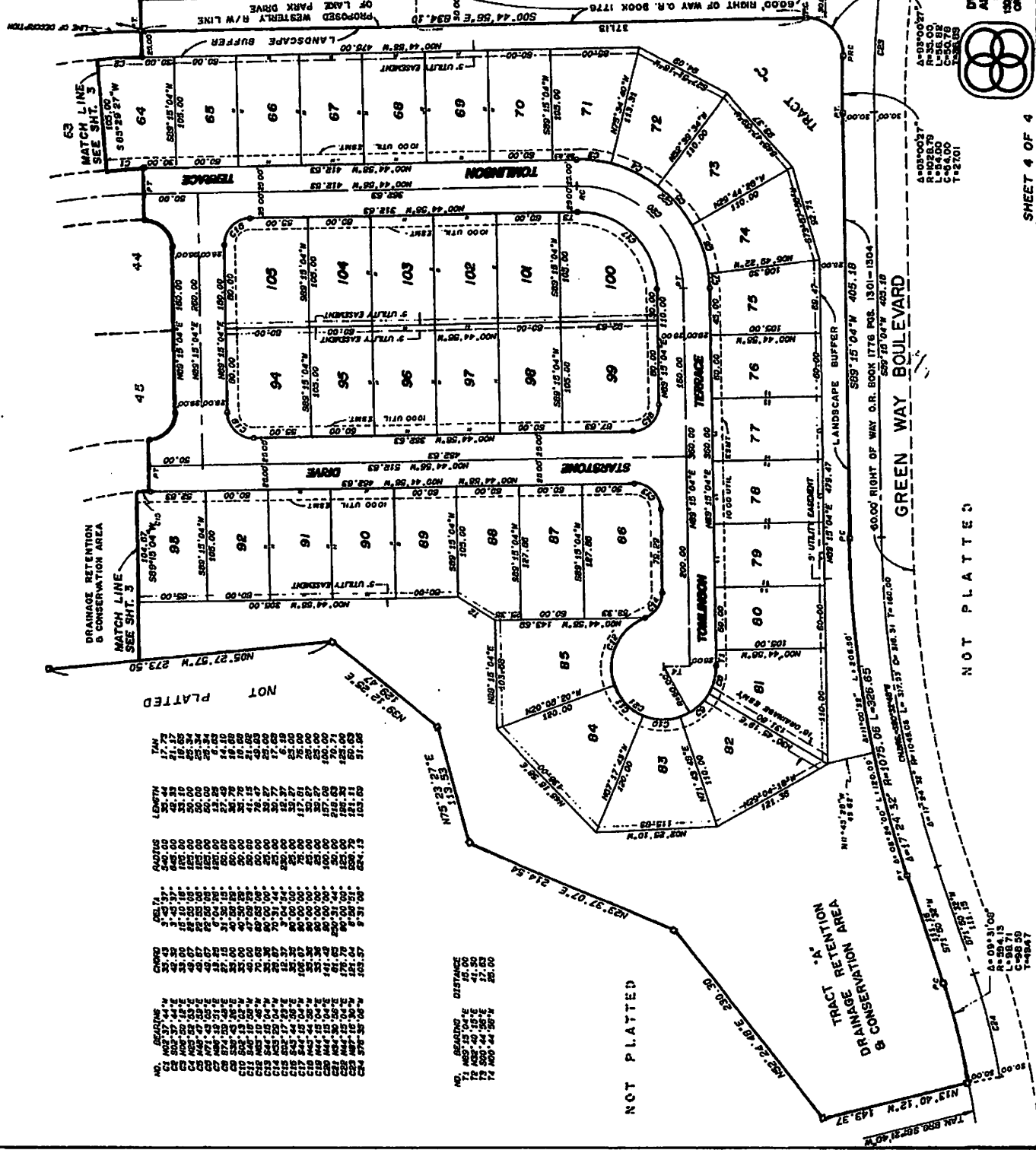
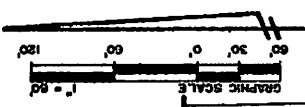
NO.	BEARING	DISTANCE
70	N89°32'48"W	18.30
71	N89°32'48"W	18.30
72	N89°32'48"W	18.30
73	N89°32'48"W	18.30
74	N89°32'48"W	18.30
75	N89°32'48"W	18.30
76	N89°32'48"W	18.30
77	N89°32'48"W	18.30
78	N89°32'48"W	18.30
79	N89°32'48"W	18.30

NO.	BEARING	DISTANCE	AREA	LENGTH	WIDTH
34	N84°17'41"E	144.85	1070.00	107.00	10.00
35	N84°17'41"E	144.85	1070.00	107.00	10.00
36	N84°17'41"E	144.85	1070.00	107.00	10.00
37	N84°17'41"E	144.85	1070.00	107.00	10.00
38	N84°17'41"E	144.85	1070.00	107.00	10.00
39	N84°17'41"E	144.85	1070.00	107.00	10.00
40	N84°17'41"E	144.85	1070.00	107.00	10.00
41	N84°17'41"E	144.85	1070.00	107.00	10.00
42	N84°17'41"E	144.85	1070.00	107.00	10.00
43	N84°17'41"E	144.85	1070.00	107.00	10.00
44	N84°17'41"E	144.85	1070.00	107.00	10.00
45	N84°17'41"E	144.85	1070.00	107.00	10.00
46	N84°17'41"E	144.85	1070.00	107.00	10.00
47	N84°17'41"E	144.85	1070.00	107.00	10.00
48	N84°17'41"E	144.85	1070.00	107.00	10.00
49	N84°17'41"E	144.85	1070.00	107.00	10.00
50	N84°17'41"E	144.85	1070.00	107.00	10.00
51	N84°17'41"E	144.85	1070.00	107.00	10.00
52	N84°17'41"E	144.85	1070.00	107.00	10.00
53	N84°17'41"E	144.85	1070.00	107.00	10.00
54	N84°17'41"E	144.85	1070.00	107.00	10.00
55	N84°17'41"E	144.85	1070.00	107.00	10.00
56	N84°17'41"E	144.85	1070.00	107.00	10.00
57	N84°17'41"E	144.85	1070.00	107.00	10.00
58	N84°17'41"E	144.85	1070.00	107.00	10.00
59	N84°17'41"E	144.85	1070.00	107.00	10.00
60	N84°17'41"E	144.85	1070.00	107.00	10.00
61	N84°17'41"E	144.85	1070.00	107.00	10.00
62	N84°17'41"E	144.85	1070.00	107.00	10.00
63	N84°17'41"E	144.85	1070.00	107.00	10.00
65	N84°17'41"E	144.85	1070.00	107.00	10.00
66	N84°17'41"E	144.85	1070.00	107.00	10.00
67	N84°17'41"E	144.85	1070.00	107.00	10.00
68	N84°17'41"E	144.85	1070.00	107.00	10.00
70	N89°32'48"W	18.30	1070.00	107.00	10.00
71	N89°32'48"W	18.30	1070.00	107.00	10.00
72	N89°32'48"W	18.30	1070.00	107.00	10.00
73	N89°32'48"W	18.30	1070.00	107.00	10.00
74	N89°32'48"W	18.30	1070.00	107.00	10.00
75	N89°32'48"W	18.30	1070.00	107.00	10.00
76	N89°32'48"W	18.30	1070.00	107.00	10.00
77	N89°32'48"W	18.30	1070.00	107.00	10.00
78	N89°32'48"W	18.30	1070.00	107.00	10.00
79	N89°32'48"W	18.30	1070.00	107.00	10.00

PROPOSED WESTERLY R/W LINE OF LAKE PARK DRIVE NOT PLATTED



LAKWOOD AT THE CROSSINGS UNIT SIX  
SECTION 20, TOWNSHIP 20 SOUTH, RANGE 30 EAST  
SEMINOLE COUNTY, FLORIDA



NO.	BEARING	DISTANCE	AREA	PERIMETER
63	N89°15'04"W	17.75	301.44	314.25
64	N89°15'04"W	17.75	301.44	314.25
65	N89°15'04"W	17.75	301.44	314.25
66	N89°15'04"W	17.75	301.44	314.25
67	N89°15'04"W	17.75	301.44	314.25
68	N89°15'04"W	17.75	301.44	314.25
69	N89°15'04"W	17.75	301.44	314.25
70	N89°15'04"W	17.75	301.44	314.25
71	N89°15'04"W	17.75	301.44	314.25
72	N89°15'04"W	17.75	301.44	314.25
73	N89°15'04"W	17.75	301.44	314.25
74	N89°15'04"W	17.75	301.44	314.25
75	N89°15'04"W	17.75	301.44	314.25
76	N89°15'04"W	17.75	301.44	314.25
77	N89°15'04"W	17.75	301.44	314.25
78	N89°15'04"W	17.75	301.44	314.25
79	N89°15'04"W	17.75	301.44	314.25
80	N89°15'04"W	17.75	301.44	314.25
81	N89°15'04"W	17.75	301.44	314.25
82	N89°15'04"W	17.75	301.44	314.25
83	N89°15'04"W	17.75	301.44	314.25
84	N89°15'04"W	17.75	301.44	314.25
85	N89°15'04"W	17.75	301.44	314.25
86	N89°15'04"W	17.75	301.44	314.25
87	N89°15'04"W	17.75	301.44	314.25
88	N89°15'04"W	17.75	301.44	314.25
89	N89°15'04"W	17.75	301.44	314.25
90	N89°15'04"W	17.75	301.44	314.25
91	N89°15'04"W	17.75	301.44	314.25
92	N89°15'04"W	17.75	301.44	314.25
93	N89°15'04"W	17.75	301.44	314.25
94	N89°15'04"W	17.75	301.44	314.25
95	N89°15'04"W	17.75	301.44	314.25
96	N89°15'04"W	17.75	301.44	314.25
97	N89°15'04"W	17.75	301.44	314.25
98	N89°15'04"W	17.75	301.44	314.25
99	N89°15'04"W	17.75	301.44	314.25
100	N89°15'04"W	17.75	301.44	314.25
101	N89°15'04"W	17.75	301.44	314.25
102	N89°15'04"W	17.75	301.44	314.25
103	N89°15'04"W	17.75	301.44	314.25
104	N89°15'04"W	17.75	301.44	314.25
105	N89°15'04"W	17.75	301.44	314.25

NOT PLATTED

NOT PLATTED

NOT PLATTED